

# JKAGENCY



## 44 Victoria Street Paddington NSW

2 1

Set within a quiet one-way enclave, this Victorian sandstock brick terrace delivers classic Paddington character with a bright north-facing aspect. A generous living and dining zone, sleek white kitchen and sunny courtyard create an easy setting for relaxed everyday living and entertaining.

**Type** : House  
**Price** : Contact Agent  
**Land Size** : 50 sqm  
**View** : <https://www.jkagency.com.au/sale/nsw/east-ern-suburbs/paddington/residential/house/8703073>

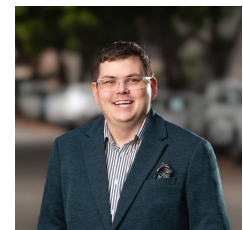
Features include:

- Victorian sandstock brick terrace in a prime one-way street enclave;
- Spacious living and dining area with easy indoor-outdoor flow;
- Sleek white kitchen with a clean, contemporary finish;

[For full version visit the website](#)

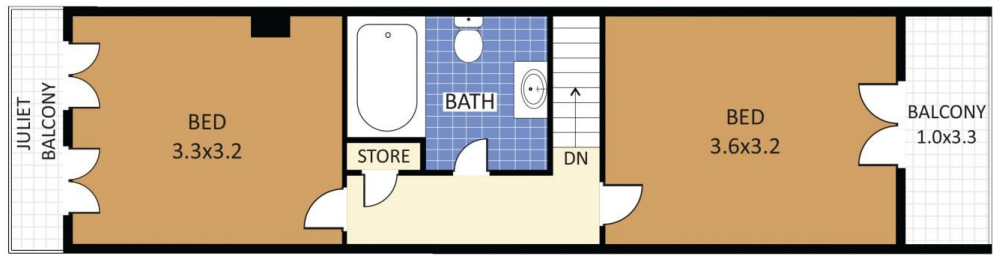


**Michael Minogue**  
7904 0440

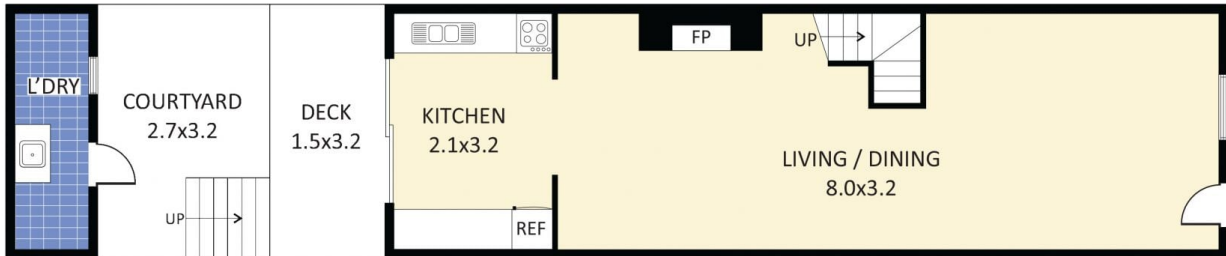


**Henry Burgoyne**  
7904 0440

<https://www.jkagency.com.au>



FIRST LEVEL



STREET LEVEL

**LEGEND:**

- F Fridge
- C'B Cupboard
- L'D Laundry
- LIN Linen
- DW Dishwasher

REALPHOTO 0405 682 225  
 realphoto.net.au

PLEASE NOTE  
 This plan has been provided by Realphoto for marketing purposes only. No reliance should be placed on this plan for construction or demolition purposes.



44 Victoria Street Paddington